

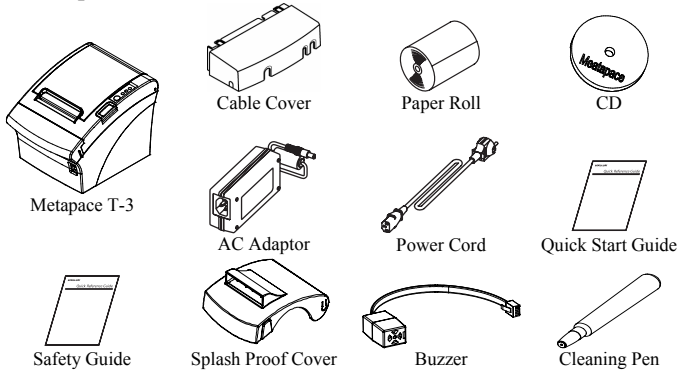
Information

This Installation Guide includes a brief outline of information necessary for product installation. For more detailed installation information, please refer to the user manual in the enclosed CD. The contents of the CD include the following.

1. Manual: User Manual, Code Chart, Control Commands
2. Drivers: Windows Drivers, OPOS Drivers
3. Utilities: a logo download tool

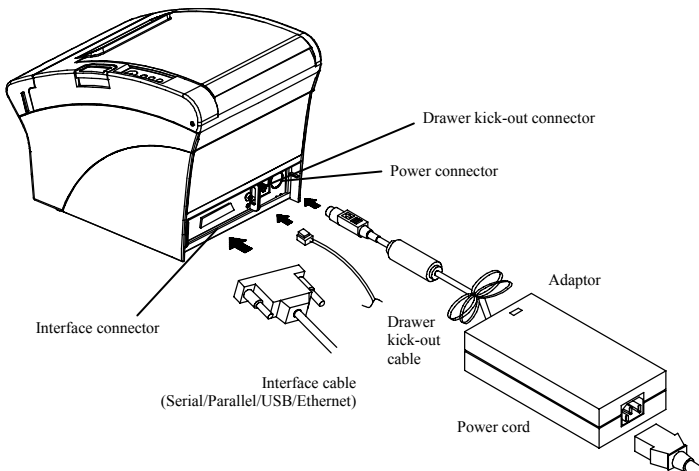
We at Metapace maintain ongoing efforts to enhance and upgrade the functions and quality of all our products. In following, product specifications and/or user manual content may be changed without prior notice.

Components

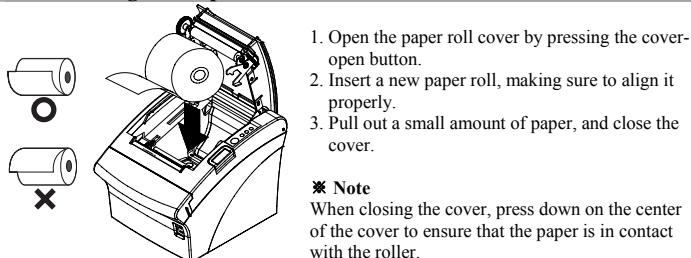


Connecting the Cables

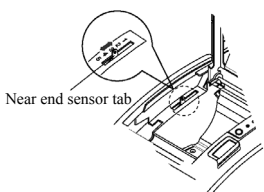
1. Turn off the printer and the host ECR (host computer).
2. Plug the power cord into the Adaptor, and then plug the Adaptor into the power connector of the printer.
3. Check the interface cable (Serial, Parallel, USB, or Ethernet), and connect the interface connector cable accordingly.
4. Plug the drawer kick-out cable into the drawer kick-out connector on the printer.



Installing the Paper Roll

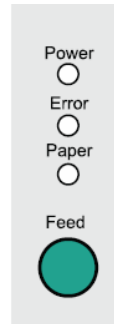


Note: Adjusting the Paper Near-End Sensor



The Metapace T-3 has a paper near-end sensor that provides notice that the paper roll is nearly exhausted. When the paper is running low, the lamp on the apparatus is lit red. If the lamp is activated even when sufficient paper remains, adjust the near-end sensor setting by pushing the tab upward towards 1.

Using the Operation Panel



- **POWER (LED)**
When turning on the power, a green LED will be lit.
- **ERROR (LED)**
When an error occurs, a red LED will be lit. (e.g. no paper, cover ajar, etc.)
- **PAPER (LED)**
Red LED will be lit when the paper roll is running low. The LED blinks when the printer is in self-test standby mode or macro execution standby mode.
- **FEED (Button)**
Press the FEED button once to discharge extra paper. Holding down the FEED button will discharge paper continuously until the button is released.

Setting the Dip Switches

Changing Dip Switch settings must be done when the printer is off. Any changes done while the printer is on will not be processed.

1. Serial Interface

DIP Switch 1

SW	Function	ON	OFF	Default
1-1	Auto Line Feed	Enable	Disable	OFF
1-2	Flow Control	XON/XOFF	DTR/DSR	OFF
1-3	Data Length	7 bits	8 bits	OFF
1-4	Parity Check	Yes	No	OFF
1-5	Parity Selection	EVEN	ODD	OFF
1-6	Baud rate Selection (bps)	Refer to the following Table 1		OFF
1-7			ON	
1-8			OFF	

DIP Switch 2

SW	Function	ON	OFF	Default
2-1	Auto cutter control	Full cut	Partial cut	OFF
2-2	Internal bell control	Internal bell disable	Internal bell enable	OFF
2-3	Auto Cutter	Auto cutter disable	Auto cutter enable	OFF
2-4	Reserved	-	-	OFF
2-5	Print Density	Refer to the following table 2		OFF
2-6			OFF	
2-7	Near-End Sensor Status	Disable	Enable	OFF
2-8	External buzzer control	External buzzer enable	External buzzer disable	OFF

2. Parallel / USB Interface

DIP Switch 1

SW	Function	ON	OFF	Default
1-1	Auto Line Feed	Enable	Disable	OFF
1-2	Reserved	-	-	OFF
1-3	Reserved	-	-	OFF
1-4	Reserved	-	-	OFF
1-5	Reserved	-	-	OFF
1-6	Reserved	-	-	OFF
1-7	Reserved	-	-	ON
1-8	Reserved	-	-	OFF

DIP Switch 2

SW	Function	ON	OFF	Default
2-1	Auto cutter control	Full cut	Partial cut	OFF
2-2	Internal bell control	Internal bell disable	Internal bell enable	OFF
2-3	Auto Cutter	Auto cutter disable	Auto cutter enable	OFF
2-4	Reserved	-	-	OFF
2-5	Print Density	Refer to the following table 2		OFF
2-6			OFF	
2-7	Near-End Sensor Status	Disable	Enable	OFF
2-8	External buzzer control	External buzzer enable	External buzzer disable	OFF

Table 1 – Baud Rate (bps) Selection

Transmission Speed	1-6	1-7	1-8	Default
2400	ON	OFF	OFF	9600
4800	ON	OFF	ON	
9600	OFF	ON	OFF	
19200	OFF	OFF	OFF	
38400	OFF	ON	ON	
57600	OFF	OFF	ON	
115200	ON	ON	ON	

Table 2 – Print Density Selection

Print Density	2-5	2-6	Default
1 (Light)	ON	ON	2
2 (Medium)	OFF	OFF	
3 (Dark)	OFF	ON	

◆ Self Test

1. Make sure the paper roll has been installed properly.
2. Turn on the power while holding down the FEED button. The self-test begins.
3. The self-test prints the current printer status, providing the control ROM version and the DIP switch setting.
4. After printing the current printer status, self-test printing will print the following, and pause. (The PAPER LED light blinks.)

SELF-TEST PRINTING.
PLEASE PRESS THE FEED BUTTON.

5. Press the FEED button to continue printing. The printer prints a pattern using the built-in character set.
6. The self-test automatically ends and cuts the paper after printing the following.
*** COMPLETED ***
7. After the self-test is complete, the printer returns to normal on-line status.

※ Note

The self-test lets you know if your printer is operating properly. It checks the print quality, ROM version, and DIP switch settings.

◆ Specifications

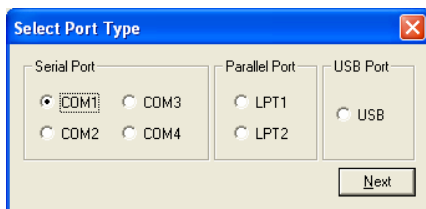
	Item	Details	
Printer	Printing Method	Thermal Line Printing	
	Dot Density	180 dpi (7dots/mm)	
	Printing Width	72 mm	
	Characters per line (default)		42 (Font A)
			56 (Font B)
			56 (Font C)
	Printing Speed *1)		47.28 lines/sec
			200 mm/sec
	Receive Buffer Size	4K Bytes	
	SMPS Input Voltage	100~240 VAC	
	Frequency	50/60 Hz	
	SMPS Output Voltage	24 VDC	
	Temperature		0 ~ 45 °C (Operating)
			-20 ~ 60 °C (Storage)
Humidity		10 ~ 80 % RH (Operating)	
		10 ~ 90 % RH (Storage) Except for paper	
Mechanism Head Life *2)	150Km		
Auto Cutter	1,800,000 Cuts		
Mechanism MCBF *2)	70,000,000 Lines		
Paper	Paper Type	Paper Roll	
	Roll Width	80 mm	
	Roll Diameter	Max 83mm	
	Paper Thickness	0.062~0.075 mm	
	Paper Tube		Inner: Ø12mm (0.47")
		Outer: Ø18mm (0.71")	

※ Note

- *1) Printing speed may be slower depending on the data transmission speed and the combination of control commands.
- *2) The above values are calculated under printing level 2 with recommended paper at normal temperature.
The values may vary with environment temperature, printing level, etc.

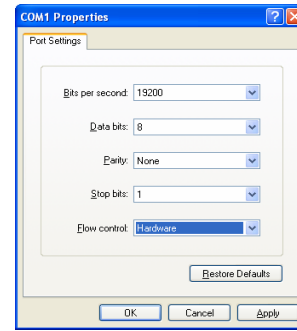
◆ Serial (RS-232C) Fixed Interface Model Windows Driver Installation: IFA-S2 TYPE

1. After running the product installation CD, run the **Thermal Printer > Metapace T-3 > Drivers > Windows Driver > Drivers Folder > T-3_Vx.x.x.exe** file.
2. In the opening installation window, click on **Next**.
3. In the **Ready to Install the Program** window, click on **Install**.
4. In the **Select Port Type** window, select one **Serial Port** and click **Next**.



< Figure 1.>

5. In the **Question** window, select Yes and the computer will reboot.
6. After rebooting, open Start > Settings > Printers & Fax > **Metapace T-3** Icon > Right-Click > Properties.
7. In the Properties window, select the Port tab and click on the Port Settings. Check to see that the information is identical to the self-test results after installation.



8. In the Properties window, after selecting the General tab, click on Print Test Page to confirm that printing is normal.

◆ Parallel (IEEE1284) Fixed Interface Model Windows Driver Installation: IFG-P TYPE

1. After running the product installation CD, run the **Thermal Printer > Metapace T-3 > Drivers > Windows Driver > Drivers Folder > T-3_Vx.x.x.exe** file.
2. In the opening installation window, click on **Next**.
3. In the **Ready to Install the Program** window, click on **Install**.
4. In the **Select Port Type** window, select one **Parallel Port** and click **Next**. (Refer to Figure 1.)
5. In the **Question** window, select Yes and the computer will reboot.
6. After rebooting, open Start > Settings > Printers & Fax > **Metapace T-3** Icon > Right-Click > Properties.
7. In the **Properties** window, after selecting the General tab, click on Print Test Page to confirm that printing is normal.

◆ USB Fixed Interface Model Windows Driver Installation: IFG-U TYPE

1. After running the product installation CD, run the **Thermal Printer > Metapace T-3 > Drivers > Windows Driver > Drivers Folder > T-3_Vx.x.x.exe** file.
2. In the opening installation window, click on **Next**.
3. In the **Ready to Install the Program** window, click on **Install**.
4. In the **Select Port Type** window, select **USB** and click **Next**. (Refer to Figure 1.)
- 5-1. If using Windows 2000:
 - ① After the **Information** window appears, turn the printer off and back on and click Yes.
 - ② After installation is complete, reboot the computer.
- 5-2. If using Windows XP/2003 Server/VISTA/2008 Server/7:
 - ① After the **Information** window appears, turn the printer off and back on and click Yes.
 - ② After the New Hardware Detected window appears, continue to click Next to install the **USB** drive, and then reboot the computer.

※ Note

When the digital registration message appears during installation, click on either **OK** or **Continue Anyway**.

6. After rebooting, open Start > Settings > Printers & Fax > **Metapace T-3** Icon > Right-Click > Properties.
7. In the Properties window, after selecting the General tab, click on Print Test Page to confirm that printing is normal.

◆ Ethernet Fixed Interface Model Windows Driver Installation: IFA-E TYPE

Refer to the user manual regarding separate Ethernet interface cards. (Refer to the CD.)

◆ WEEE (Waste Electrical and Electric Equipment)



This marking shown on the product or its literature, indicates that it should not be disposed with other household wastes at the end of its working life. To prevent possible harm to the environment or human health from uncontrolled waste disposal, please separate this from other types of wastes and recycle it responsibly to promote the sustainable reuse of material resources. Household users should contact either the retailer where they purchased this product, or their local government office, for details of where and how they can take this item for environmentally safe recycling. Business users should contact their supplier and check the terms and conditions of the purchase contract. This product should not be mixed with other commercial wastes for disposal.